

## RoadHog Cold Planer - Generation G5 vs Generation 5 HD ( Heavy Duty )





# Plate Thickness

G5

5/8"

Chassis

Depth skis

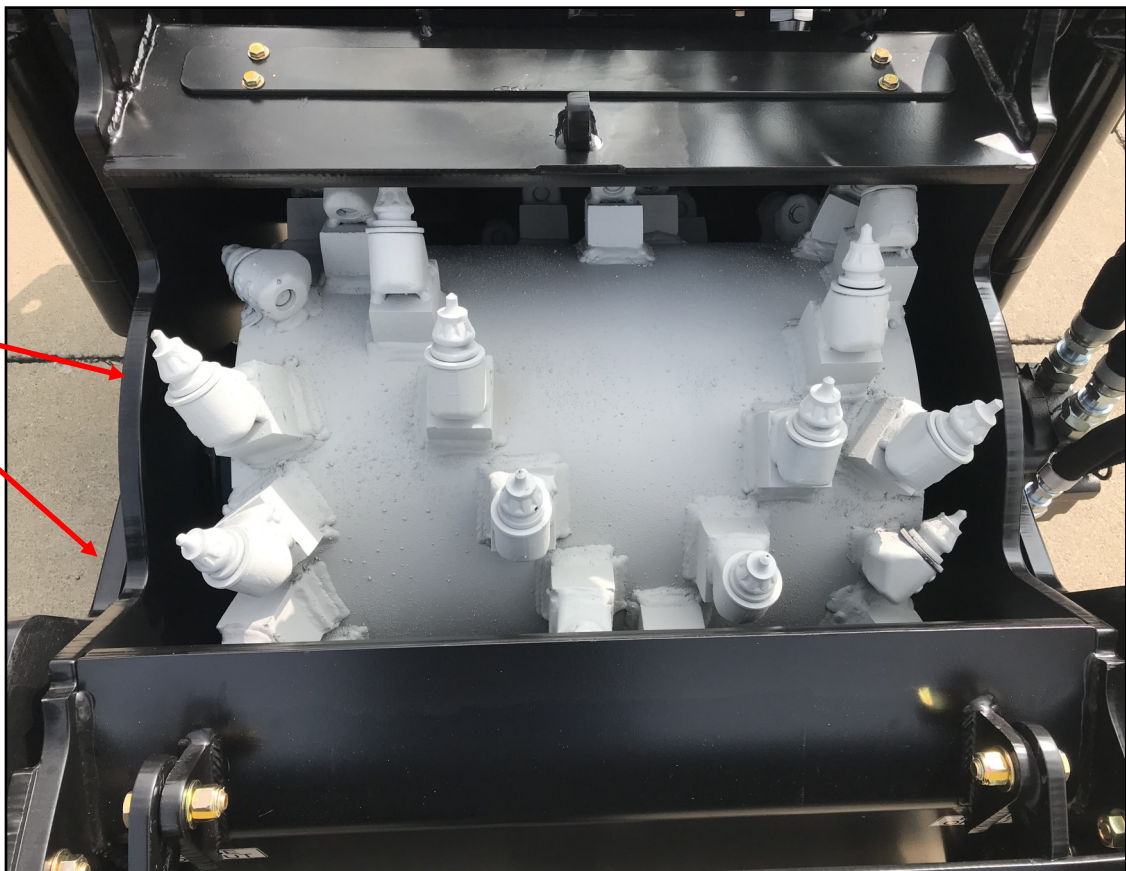


G5HD

3/4"

Chassis

Depth skis

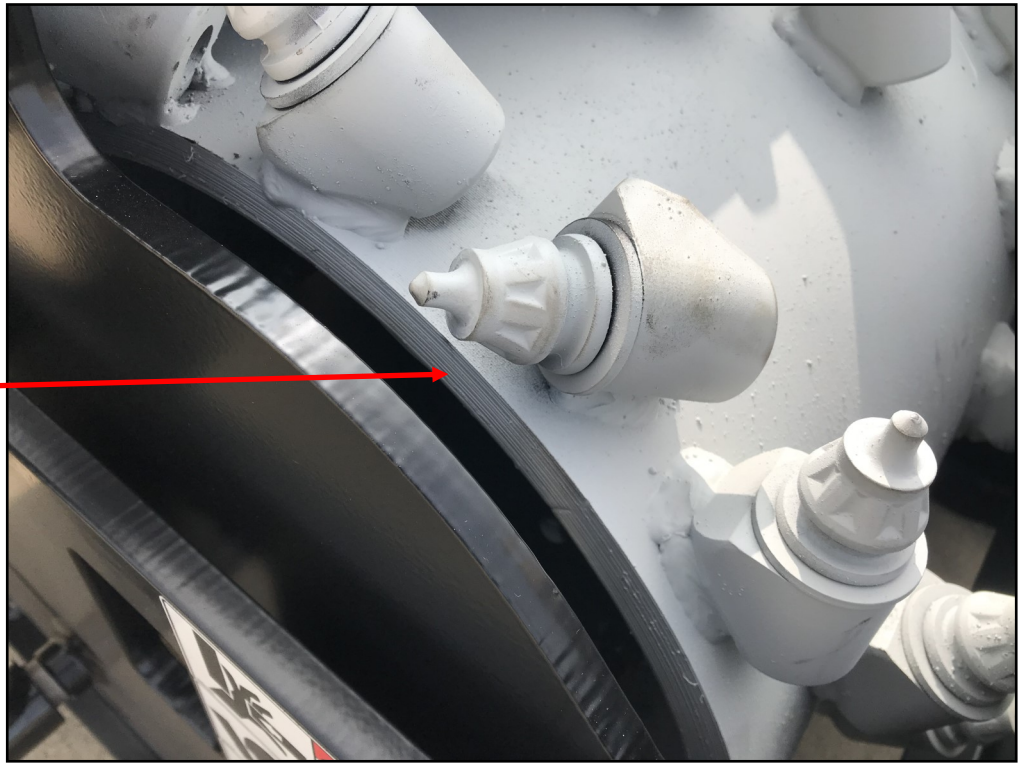


## Drum Thickness & Hardfacing

**G5**

**5/8"**

**Drum wall**

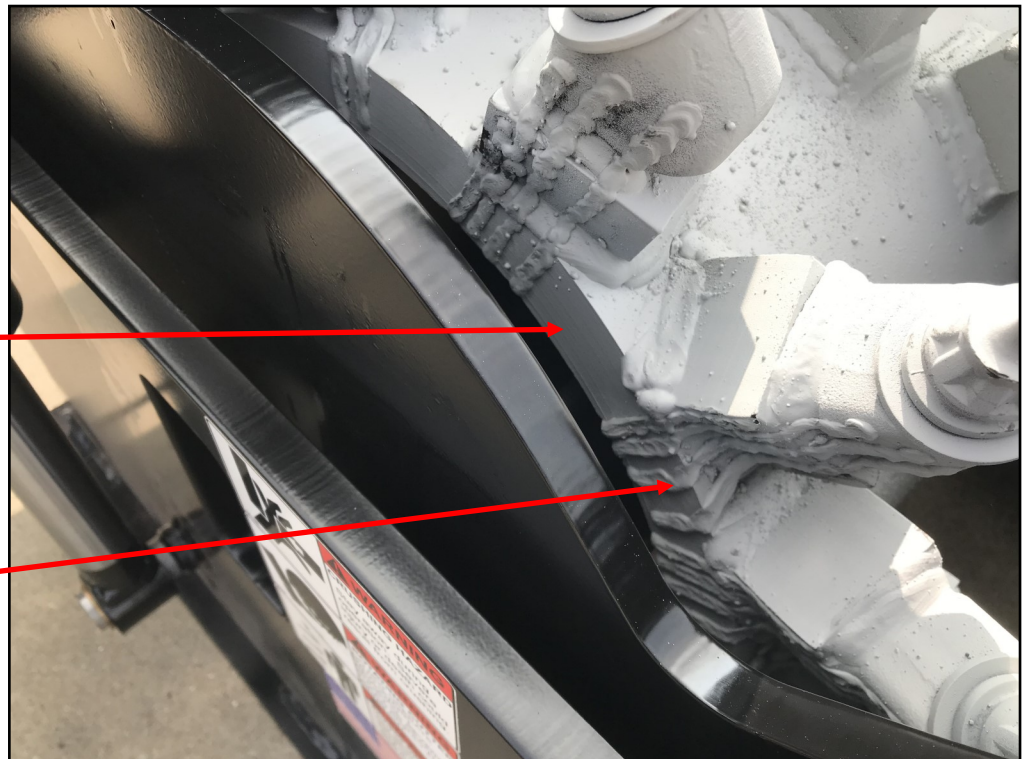


**G5HD**

**1.5"**

**Drum wall**

**Hardfacing**

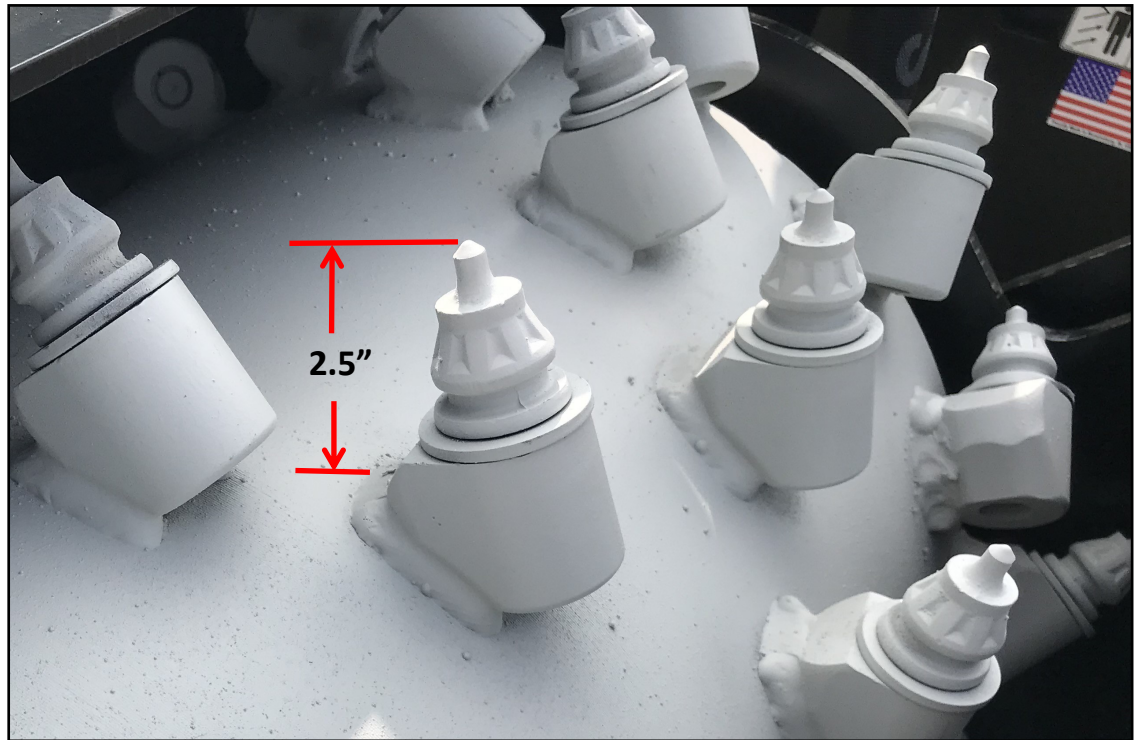




## Cutting Depth & Tooth Clearance

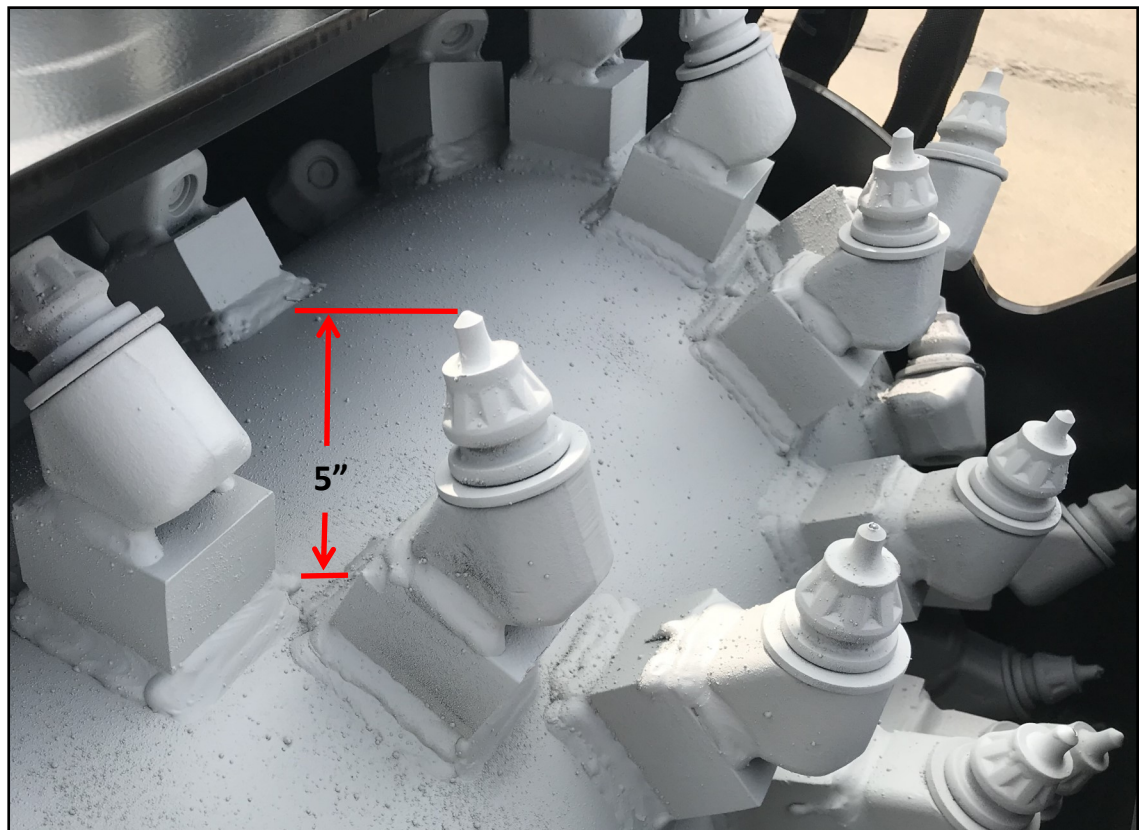
**G5**

**0-6" depth**



**G5HD**

**0 - 8" depth**





## Depth Cylinders

**G5**

**1.25" cyl. rod**



**G5HD**

**1.5" cyl. rod**



## Summary

	<b>G5</b>	<b>G5HD</b>	<b>Benefit</b>
Drum wall thickness	5/8"	1.5"	Adds weight over the center of the cut; increased longevity
Clearance, drum surface to tooth tip	2.5"	5"	Reduces drag in cuts below 2.5" which yields higher productivity
Drum housing plate thickness	5/8"	3/4"	Higher strength and added weight
Depth ski plate thickness	5/8"	3/4"	Superior ski stability and longer life
Cutting depth	0 - 6"	0 - 8"	Allows deeper cuts for base repair and stabilization work
Depth cylinder rod diameter	1.25"	1.5"	20% thicker for added strength and longer service life
Hardfacing	No	Yes	Extends the wear properties of both drum edge and holder
Weight difference		+ 21%	Reduced vibration, which increases productivity and component life