



Skidsteer Cold Planer - Generation G5 vs Generation 5 HD (Heavy Duty)



Plate Thickness

G5

5/8"

Chassis

Depth skis

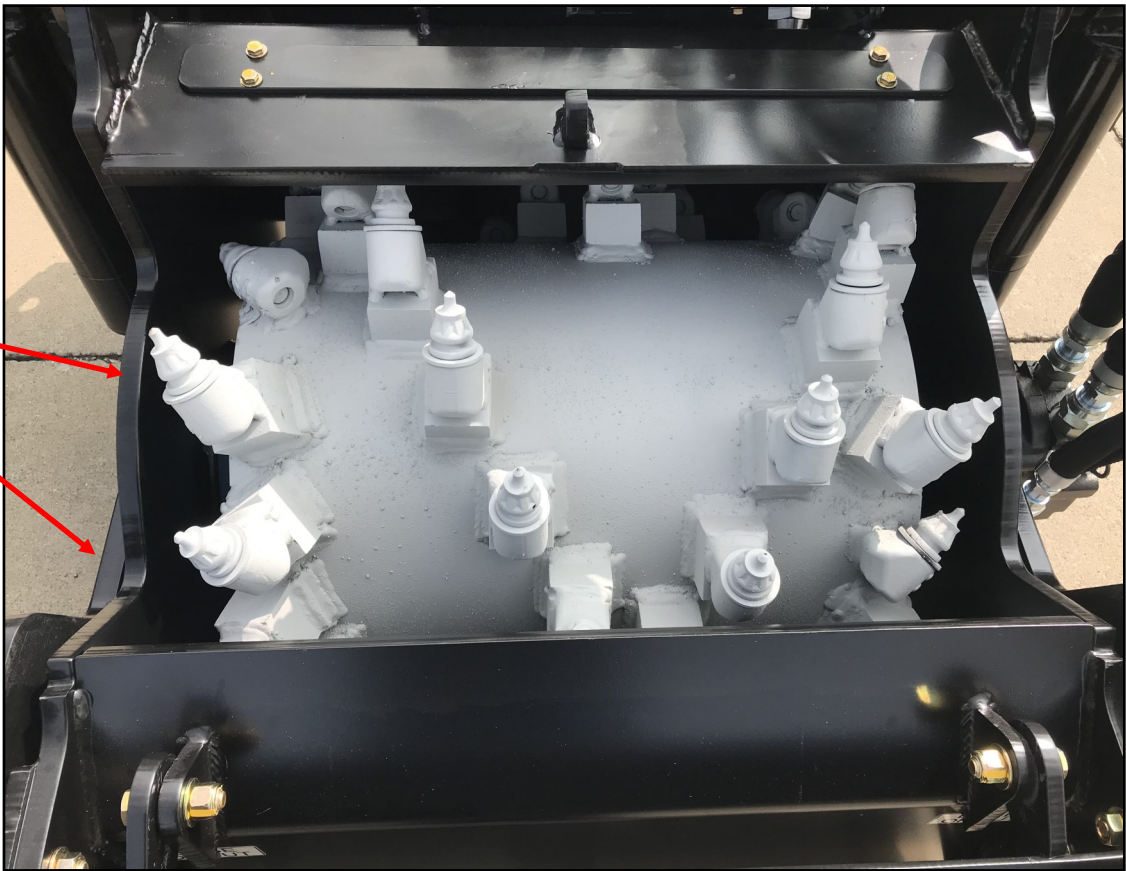


G5HD

3/4"

Chassis

Depth skis

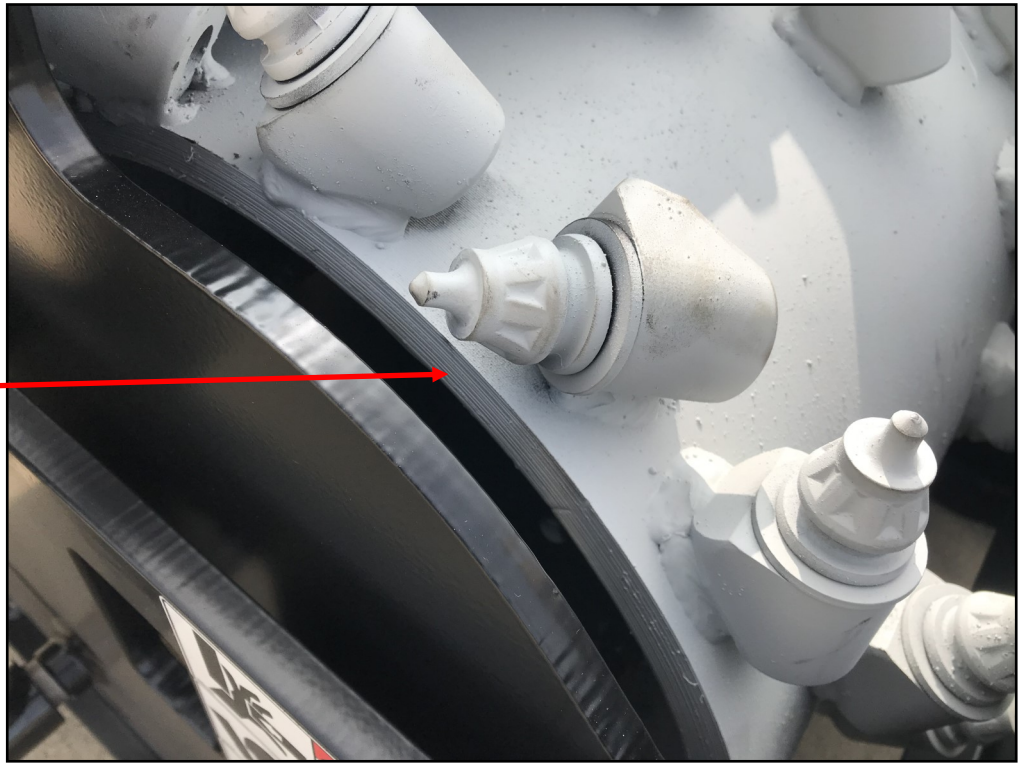


Drum Thickness

G5

5/8"

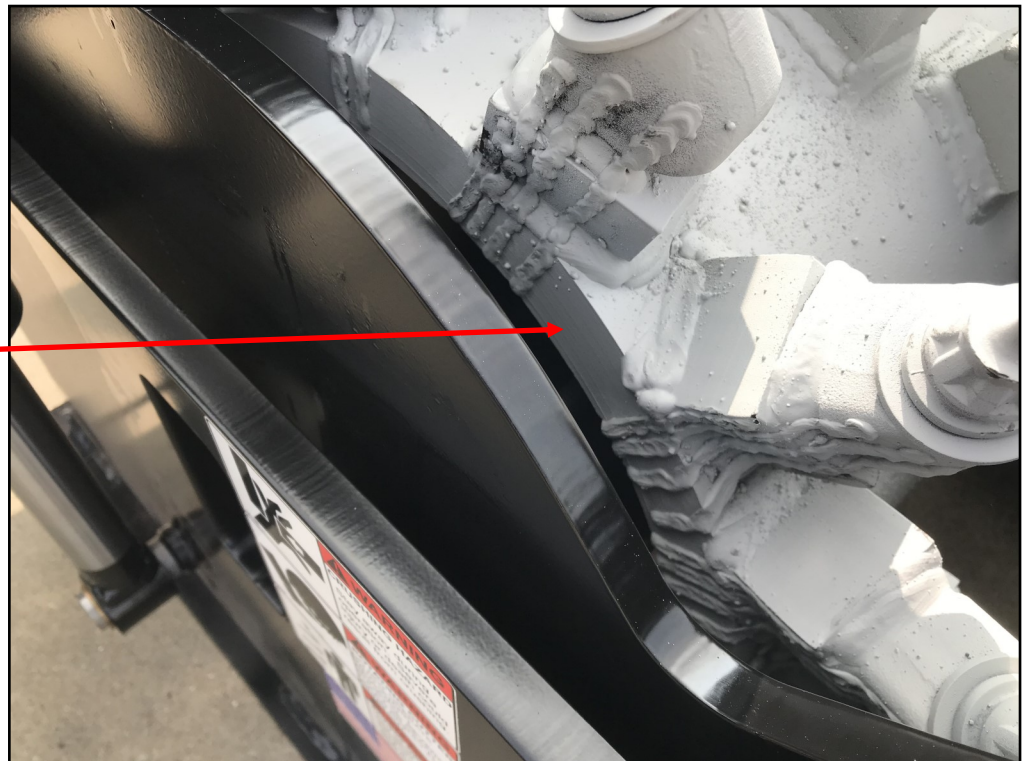
Drum wall



G5HD

1.5"

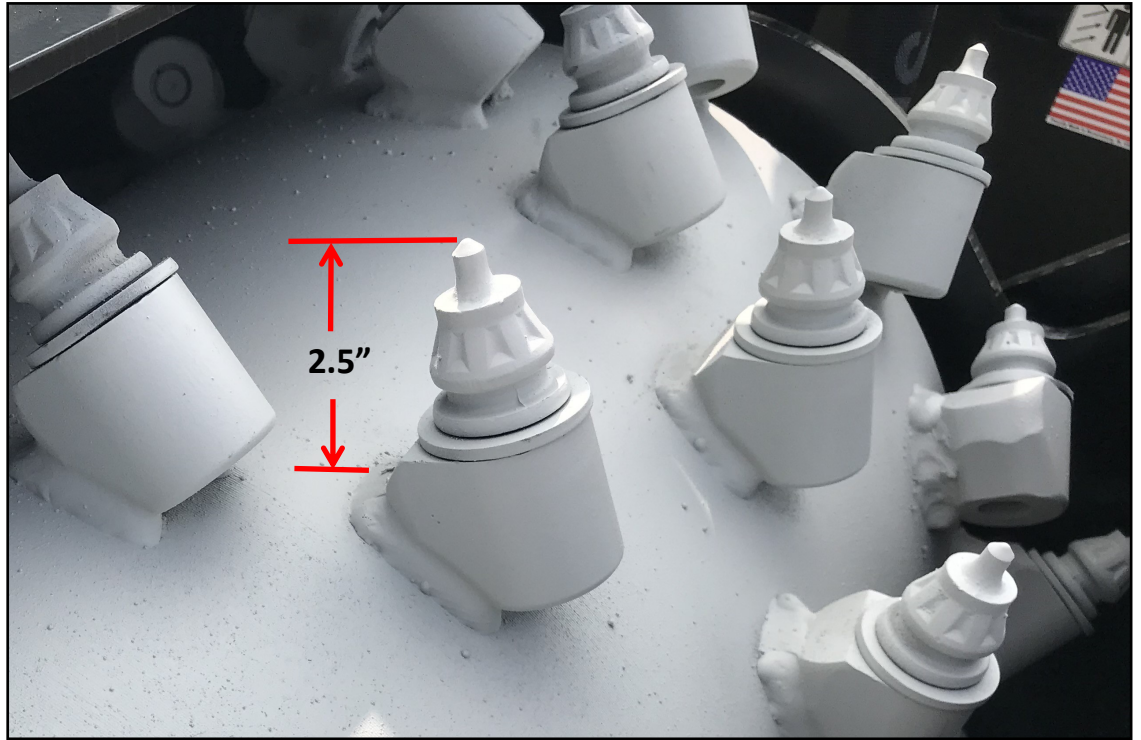
Drum wall



Tooth Clearance

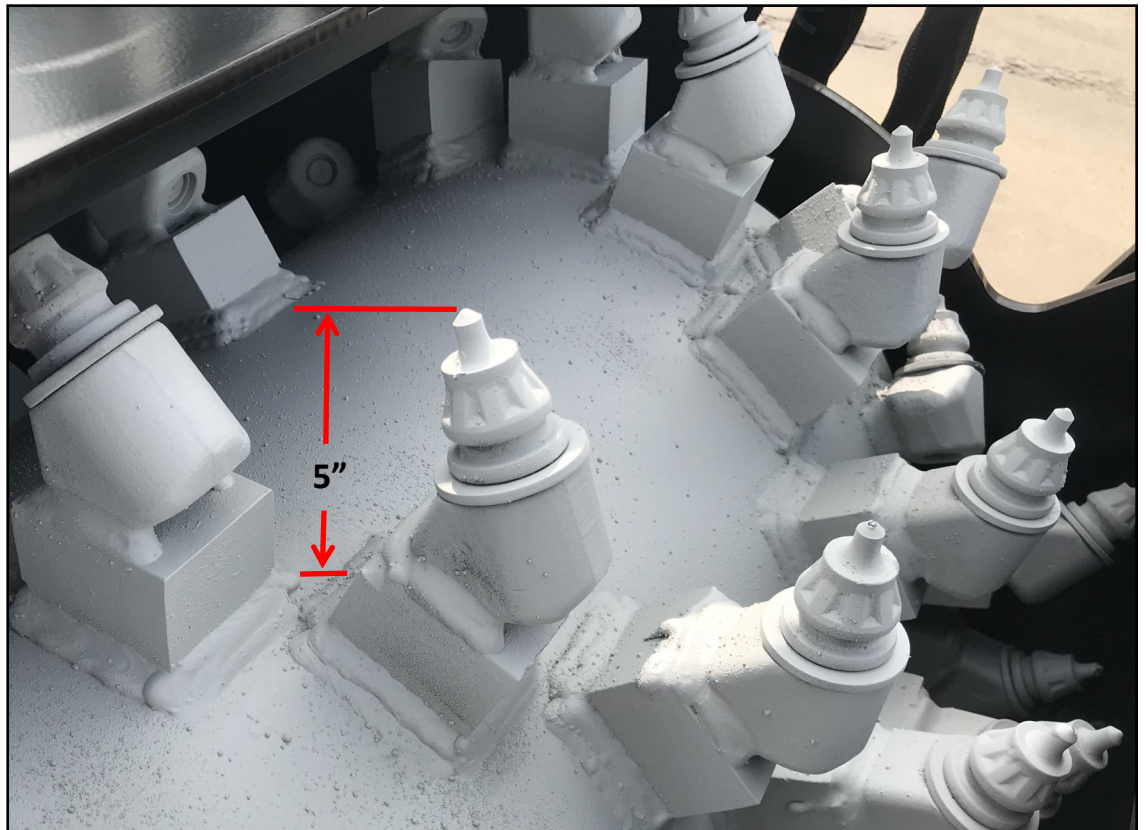
G5

0-6" depth



G5HD

0 - 8" depth



Front Debris Guard

G5



Rubber Flap

G5HD



Steel guard

Summary

	G5	G5HD	Benefit
Drum wall thickness	5/8"	1.5"	Longer drum life and additional weight over the center of the cut
Clearance, drum surface to tooth tip	2.5"	5"	Reduces drag in cuts below 2.5" which yields higher productivity
Drum housing plate thickness	5/8"	3/4"	Added strength and added weight over the cut
Depth ski plate thickness	5/8"	3/4"	Higher ski stability and longer life
Depth of cut	0 - 6"	0 - 8"	Provides deeper cuts for superior base repair and stabilization work
Front guard material	Rubber	Steel	Higher durability and less material escaping the drum housing
Weight difference		+ 21%	Reduced vibration, which increases productivity and component life